

The Edith Borthwick School

Weekly Update

Friday 6th October 2023

Head's Update

Good afternoon,

What an eventful week we have had! Thank you again for all your support yesterday. I know that it was busy, but all of our learners managed to leave site safely thanks to you all picking up your children so promptly and because our staff worked so well as a team. I hope that you know that closing the school is always a last resort and we held off until it was confirmed that the earliest it would be fixed was later in the afternoon. We ran out of water quite early in the morning and I can't keep the school open without hygiene facilities, including toilets. I was nervous when I saw the road works this morning but everything seems OK now, thankfully!

We have been learning about **autumn and harvest** now that we are in October. **We are still collecting for the Braintree Food Bank** - I know that anything that you can spare would be very much appreciated. **They are coming to collect what items we have on Tuesday 10th October 2023, but we will continue to collect until the end of the half term on Thursday 19th October 2023.**

This morning, we held our first parent coffee morning of the year, which was lovely! Thirteen parents managed to attend and have come up with a range of topics that they want to find out more about over the next year. Following on from their feedback, **we will continue to hold the coffee mornings on a Friday morning, instead of the proposed Friday afternoon. The next one will be 9.30am -11.00am on Friday 3rd November 2023.**

We have decided to run a Christmas fair this year, on Wednesday 13th December 2023. More information will follow at a later date as we will be inviting parents/carers into school, but I wanted to give you notice as **we will be asking for raffle prizes and donations towards a second hand toy stall**, so if you are planning to have a sort out, please keep them for us!

We will be sending out information today regarding a vacancy for a Parent Governor. We are looking for someone who could support the Governing Body, which is an interesting role and one that is very important to ensure the success of our school.

Just a reminder that Friday 20th October 2023 is an inset day, so school will not be open to learners.

I hope that you all have a lovely weekend in the sun!

Best wishes,

Maggie

★Class of the Week★



Leopard Class



Julie, Class Teacher says...

This term, many of the learners in Leopard class are new learners and are starting their Edith Borthwick journey! They have all settled really well into the school day and are thriving with the structure, routine and learning taking place.



This term, our learning topic is **'toys'**, so lots of our learning has been based around small weekly themes that encompass this. We have been washing dolls and babies (and of course, ourselves as well!) during sensory play, explored different ICT toys, and have been working on our number skills by counting monkeys, cars and trains with their carriages.



We have also been very lucky to have visits from Charlotte from Diddi Dance and Anita from Cheeky Chimps, exploring music and moving our bodies!



All the Leopard team are very proud of you all, keep up the hard work!



The Edith Borthwick School

Weekly Update

Upcoming dates

Non-Pupil Day
Friday 20th October 2023

Half Term
Monday 23rd – Friday 27th October
2023

Parent Governor Vacancy

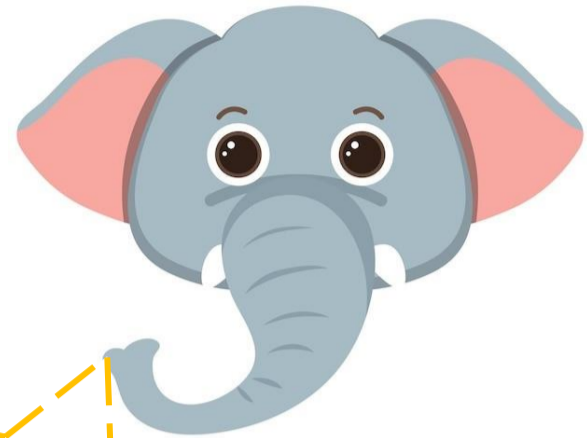
Would you like to be a school governor?
We have a vacancy for a **Parent Governor on our Governing Board** – more information will come home with your learner today!

If you would like further information, please email Maggie:
maggiel@edithborthwick.essex.sch.uk

We would love to see anyone who is interested in supporting the school in this role



Edie's Corner



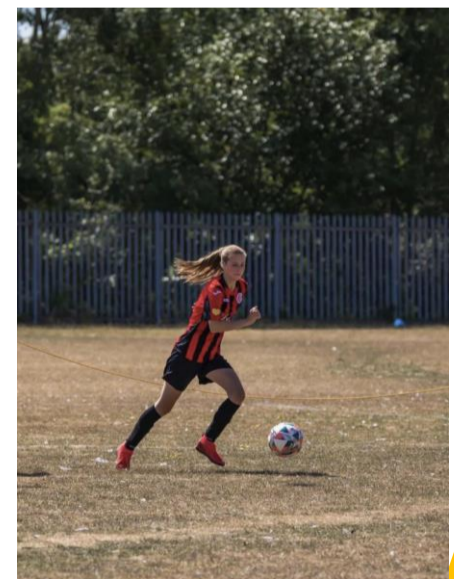
Word of the Week:



★ Favourite Hobby/Activity ★

Sarah-Jane from Sealion Class

My hobby is playing football for GBFC Ladies!



HARVEST Festival

SHOPPING LIST

Essential Items

Jam
Tinned Cold Meat
Packet Custard
Cereal
Sponge Puddings
UHT Milk

To Maintain Our Stocks

Instant Snack (Pot Noodle)
Tinned Hot Meat (Stew, mince)
Packet Soup
Pasta Sauce
Deodorant

We ask for small packs as larger packs do not fit in our boxes making it difficult for our clients to carry home. Also, we are unable for hygiene reasons to split large size or catering packs.

We follow the standards set by the Food Standards Agency. We can only accept donations of unopened and undamaged goods that are still well within their "use by" date (no less than six months if possible). Items which do not meet these requirements cannot be used and your donation may be wasted.

01376 230684 info@bristweavesfoodbank.org.uk



Registered Charity No. 1146782. Registered in England and Wales. Registered Company No. 8181618

Favourite Hobby/Activity of the Week

If you have any photos or stories that you would like us to share, please email:

admin@edithborthwick.essex.sch.uk