

The Edith Borthwick School Weekly Update

Friday 26th January 2024

Head's Update

This week started on Monday for staff with an inset day, and on Tuesday for learners. We have been following the theme of 'Arts Show' in assemblies and classes, with learners being creative and using different artistic mediums to create pictures! This has made us start to **think about our Arts Week that we hold in the summer term!**

Our lower school playground has been used for the first full week.

After a couple of setbacks due to construction and the icy weather, learners have finally enjoyed it every day this week - it looks amazing! **A massive thank you again to our Friends of Edith Borthwick (FOEBS) for funding this project. Thank you to all our families and their friends who donated so generously to make this project happen.** Our learners are thrilled!



On a sad note, **the wind on Sunday has broken our three bed trampoline beyond repair.** This is one of our most used pieces of playground equipment in school, and will be sorely missed. We will be looking to see how we can replace this vital piece of equipment, as so many learners use it to stay well regulated.



We have had a number of learners coming into school wearing **smart watches.** Unfortunately, **we are having to say that they are the same as phones, and learners need to put them in their bags, lockers or classroom cupboards** due to their ability to send and receive messages, and record/take photos. **If you would like your child to wear a watch, please buy a simple one that only tells the time.**

Staff illness has been high again this week, with some very nasty bugs going around. We have not had to partially shut any classes (when other schools have had to), but it has been close on several days. We will only do this as a last resort, and if the class cannot be safely open due to the number of staff. Hopefully we will not have to do this.

A quick reminder of car park timings:

- **Bus drop off at 9.10am**
- **Parent drop off at 9.15am/9.20am** (as soon as buses have been emptied) **until 9.25am**

Staff have been asked to go inside at 9.25am, **so if your child arrives after this time, they need to go in through the main office. All learners are expected to be in by 9.25am** please, so that we can start learning as quickly as possible.

Have a good weekend!

Kind regards,

Maggie

★Class of the Week★

 **Flamingo Class** 

Jerry, Class Teacher says...



I took over as the teacher of Flamingo class at the beginning of this term! It has been a challenge for me to get to know all of my new learners and staff – and it has been a challenge for them to come to terms with my eccentric nature!

I have thoroughly enjoyed the experience so far and I look forward to working with them all.

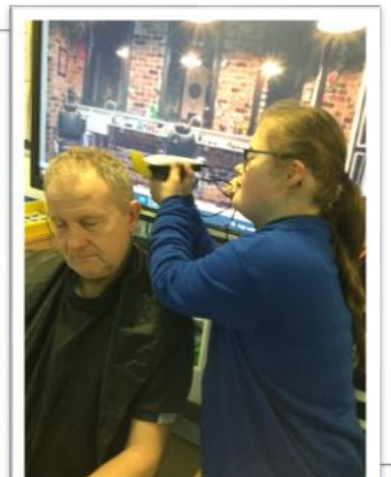
This term, the learners have been studying areas relating to the phase topic of **'the world of work'**. They have also been **developing their independence skills in sensory baking, cleaning and personal care sessions.** They have even had the opportunity to shave me and cut my **hair.** I'm so brave!

They have learnt about **various artists' techniques in creative sessions,** such as that of Andy Warhol and Georges Seurat.

We have spent a lot of time **developing literacy and numeracy skills,** and in **physical and well-being lessons,** the learners have enjoyed **indoor archery, curling and boccia.**

We are all looking forward to when the weather improves so that we can start to do some outdoor-based learning!

See Edie's Corner on the next page for signs linked to the words in blue!



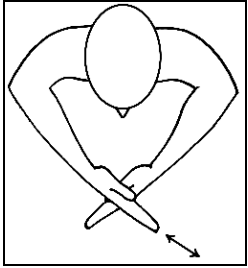
The Edith Borthwick School Weekly Update



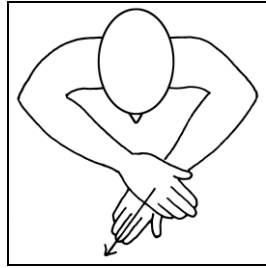
Edie's Corner

Signs linked to Jerry's Class of the Week

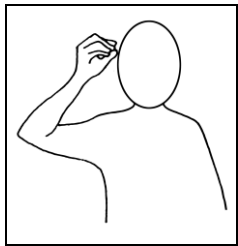
Work



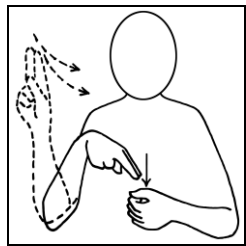
Clean



Hair



Paint

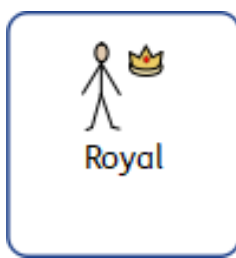


Edie's Jokes of the Week

Why are spiders so smart?
They can find everything on the web!

What do you call a fly without wings?
A walk!

Word of the Week



Upcoming dates

Parent/Carer Coffee Morning

Fri 2nd February 2024
9.30am – 11.00am

February Half Term

Mon 19th February – Fri 23rd February 2024

Easter Break

Fri 29th March – Fri 12th April 2024

May Day (Bank Holiday)

Mon 6th May 2024

May Half Term

Mon 27th – Fri 31st May 2024

Non-Pupil Days

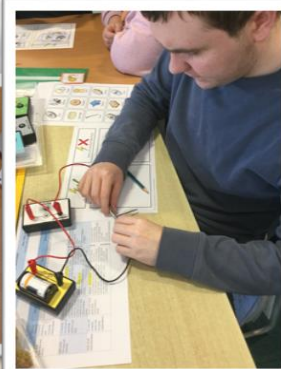
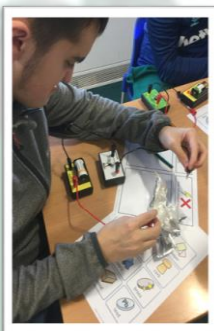
Fri 28th June & Mon 1st July 2024

Term finishes

Tues 23rd July 2024

Elsewhere around the school

Gatwick Class have been looking at symmetry in Art, making butterfly paintings, as well as exploring the invention of the lightbulb and how it works. This led to experimenting with different materials to see if they conducted electricity. We've had a great time!



Southend Class celebrated Australia Day! We created some Aboriginal art, looked at Australian animals and their habitats, how Australia became colonised and we all spoke in an Australian accent all day!

Two of our learners created a native Australian cake called a 'lamington'. Everyone had a great Aussie Day!



ECO-School Update

We have had a **wildlife camera** very kindly given to us by the husband of Ann Smith (who is running this exciting new initiative!), so we will be looking at where to put it next weekend to take some pictures!

Favourite Hobby/Activity of the Week

If you have any photos or stories that you would like us to share, please email:

admin@edithborthwick.essex.sch.uk