

The Edith Borthwick School Weekly Update

Friday 26th April 2024

Head's update

Happy Friday!

With St. George's Day taking place last Tuesday, we have been learning about St. George this week! Our footballers in the upper end of the school like the flag of St. George due to its association with the England football team!

In school, **we have been making final preparations for the residential that we are running for leavers** as it is now less than two weeks before they go! We are all very excited because this is the first residential that we have run since before Covid! We are hoping to be running more over the next few years, hopefully for a variety of ages.

We have had to make the difficult decision this week to stop learners from wearing smart watches in school, due to the way that they were being used. Because they can link to phones and have photos on them, they present a safeguarding risk. **I will be sending out our updated policy next week.**

I sent a Parentmail this week regarding parents/carers entering the building without going through the office. **Please remember that anyone who doesn't work for the school needs to go through the office and be signed in, unless they asked to come in and are accompanied by a staff member.** Parents do not need to take learners to class – our staff will do that. Please be patient with us, as our staff take the learners round in a staggered way and need to settle them before coming and collecting the next learner.

Please ensure that your children are still bringing in coats as it has been cold again this week. Hopefully soon we will feel like it is spring! On a positive, the rain has made our field look very green! Fingers crossed for a warmer week next week.

Wishing you all a nice weekend.

Best wishes,

Maggie

★Class of the week★

✈ Gatwick Class ✈

Darren, Class teacher says...



This half term, we began work on **our new 'moving on' curriculum.**

We have been working on **functional literacy and numeracy.** We have also **worked on careers and what it means to earn money!**

As the weather is now perking up, on **Mondays**, we have **been going out in the garden** and have put up some **bamboo canes to grow our runner beans up** - we are also growing **onions, garlic and rhubarb!**

On **Thursdays**, we have **our morning out in the community** and this half term, we are going to **the café at Hylands Park** to practice money and social skills!

See Edie's corner on the next page for signs linked to the words in blue!



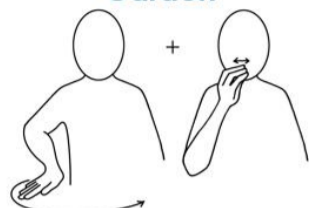
The Edith Borthwick School Weekly Update



Edie's corner

Signs linked to Darren's Class of the week

Garden



Morning



Monday

Tap 'M' on
edge of
hand twice



Gradually
uncover eyes



Thursday

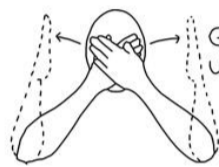
Finger spell
'T'



Finger spell 'H'



Gradually
uncover eyes



Edie's jokes of the week

Knock! Knock! Who's there? **Wa.** Wa who?
(Wahoo!) **What are you so excited about?**

Why can't a leopard hide? Because they're
always spotted!

Word of the week



crab

Elsewhere around the school

Iguana class had a great session at martial arts!



ECO-Schools update

We have started work on our bug hotel!

Photos to follow!

💡 Eco tip of the week 💡

Save water by collecting rainwater for your plants!

You can collect rainwater in buckets, cups or even a water butt and use it instead of drinking water to water your plants!

Favourite hobby/activity of the week

If you have any photos or stories that you would like us to share, please email:

admin@edithborthwick.essex.sch.uk

Upcoming dates

Summer term

May Day (Bank holiday)
Mon 6th May 2024

Half term

Mon 27th – Fri 31st May 2024