

The Edith Borthwick School

Weekly Update

Friday 13th October 2023

Head's Update

Happy Friday everyone!

This week, we have been studying 'space' as part of **Space Week**. Some learners have found this topic really interesting!

Yesterday, we had a visit from a group of cyclists representing the Lord's Taverners, who have been fundraising to provide table cricket sets to local special schools and they wanted to donate one to us! To raise funds, the group completed a route that started yesterday morning at Kingswode Hoe Special School in Colchester, then went to Chatten Free Special School in Witham, then came to us, and their last school was Columbus School and College in Chelmsford. The route was 50 miles and they were very wet by the time they came to us! Please see a photo on the next page.

To thank the cyclists, Jerry and Iguana class served them tea and coffee from our café, and homemade shortbread biscuits. The cyclists then met Heathrow class, who made up our table cricket team from last year! As part of their donation, we also receive table cricket training, some of which started today and was enjoyed by a number of classes! **A massive THANK YOU goes out to the Lord's Taverners for being so generous.**

Information was sent out last week about becoming a Parent Governor. We are looking for someone who could support the Governing Body - it's an interesting role and one that is very important to ensure the success of our school! Contact me for a chat if you want to find out more:
maggiel@edithborthwick.essex.sch.uk

Just a reminder that Friday 20th October 2023 is an inset day, so school will not be open to learners. We look forward to seeing everyone back on Monday 30th October 2023, after the half term break!

Don't forget that we are having our Halloween discos on Tuesday 31st October 2023 and we are encouraging as many learners and staff as possible to dress up!

Wishing you a lovely weekend.

Kind regards,

Maggie

★Class of the Week★



Giraffe Class



Tilly, Class Teacher says...



This term, many of the learners in Giraffe class are new to the school and have been settling in so well with everybody else in the class!

All the learners are working so well together and learning all about the routines and lessons that take place to support their development.

This term, our topic is '**toys**'. Each week, we are focusing on a variety of small themes that link to this. We have been enjoying carpet play exploration, exploring different types of transport and also engaging in sensory stories with those themes. We have also been **developing our number, shape and colour skills** through cutting and sticking, counting colourful cars, nursery rhyme activities and sensory exploration at their tables.

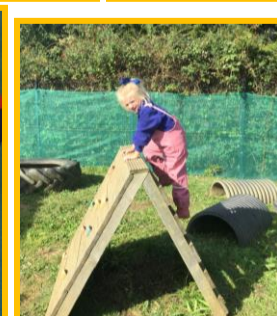
Each week, **we enjoy visiting the library to choose books to explore.** All of the class have also began participating in **weekly cooking lessons** to develop their independence and life skills!



The learners get the opportunity to have lots of creative lessons with visits from **Anita from Cheeky Chimps** and **Charlotte from Diddi Dance**. The learners can listen and participate in different dances, whilst also having the opportunity to explore many musical instruments!



The Giraffe team are so proud of each of you, well done!



The Edith Borthwick School

Weekly Update

Upcoming dates

Last collection for Braintree Food Bank
Thursday 19th October 2023

Non-Pupil Day
Friday 20th October 2023

Half Term
Monday 23rd – Friday 27th October 2023

Halloween Disco (Daytime)
Tuesday 31st October 2023

Parent/Carer Coffee Morning
Friday 3rd November 2023 9.30am -
11.00am



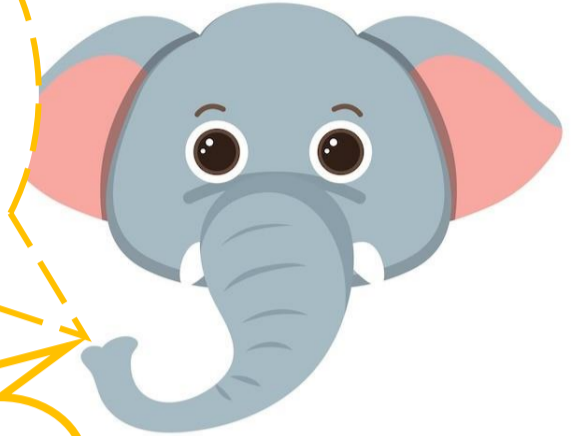
Edie's Corner



Word of the Week:



pine cone



On Tuesday 31st October, **learners and staff are invited to wear costumes** to celebrate Halloween (if they would like to)

Visit from the cyclists representing the Lord's Taverners, Thursday 12th October 2023



Edie's Jokes of the Week

Why did the pony get sent to his room? Because he wouldn't stop horsing around!

What do you call a blind dinosaur? A do-you-think-he-saw-us!

★ Favourite Hobby/Activity ★

Brookland's favourite thing is walking our dog Zeus!



Essential Items

Jam
Tinned Cold Meat
Packet Custard
Cereal
Sponge Puddings
UHT Milk

To Maintain Our Stocks

Instant Snack (Pot Noodle)
Tinned Hot Meat (Stew, mince)
Packet Soup
Pasta Sauce
Deodorant

We ask for small packs as larger packs do not fit in our boxes making it difficult for our clients to carry home. Also, we are unable (for hygiene reasons) to split large size or catering packs.

We follow the standards set by the Food Standards Agency. We can only accept donations of unopened and undamaged goods that are still well within their "use by" date (no less than six months if possible). Items which do not meet these requirements cannot be used and your donation may be wasted.

01276 330694 info@braintreefoodbank.org.uk



Registered Charity No. 1148782. Registered in England and Wales. Registered Company No. 8183618

Favourite Hobby/Activity of the Week

If you have any photos or stories that you would like us to share, please email:

admin@edithborthwick.essex.sch.uk